



4th
Basic

5th
Advanced

Helping With Math

USA
GRADES

Addition of Decimals

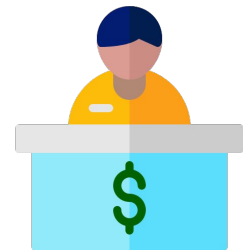
*Suitable for students
aged 8-10*



This pack is suitable for learners aged 8-10 years old or 4th and 5th graders (USA). The content covers fact files and relevant basic and advanced activities involving addition of decimals.



Come, let's add numbers!



- Decimals are numbers which are expressed in the scale of tens.
- These numbers are composed of a whole number, a fraction of a whole number, and the most important part which is the decimal point.
- Adding decimals is almost the same with adding whole numbers.
- Always remember that decimals are only fractions of a whole number.



ADDITION OF DECIMALS

STEPS IN ADDING DECIMALS

Line up all the decimal points vertically. All the decimal points must be parallel to one another.



Example:

$$\begin{array}{r} 1.25 \\ + 1.5 \\ \hline \end{array}$$

Notice the decimal points in red.

There should be the same number of digits. If not, add additional zeros (0) to the right of the decimal place.

Example:

$$\begin{array}{r} + 1.25 \\ 1.50 \\ \hline \end{array}$$

The decimals now have the same number of digits.

Now, add the decimals like how you will add a whole number. The decimal point of the sum should still be placed parallel to the addends' decimal points.

Example:

$$\begin{array}{r} + 1.25 \\ 1.50 \\ \hline 2.75 \end{array}$$



PRACTICE TIME!



$$\begin{array}{r} + 1.25 \\ 1.25 \\ \hline \end{array}$$

$$\begin{array}{r} + 1.10 \\ 1.2 \\ \hline \end{array}$$

$$\begin{array}{r} + 1.15 \\ 1.0 \\ \hline \end{array}$$

$$\begin{array}{r} + 1.00 \\ 1.25 \\ \hline \end{array}$$

Remember to follow the steps in adding the decimals.
Don't miss a step!



TABLE OF ACTIVITIES

| Ages 8-9 (Basic) | | <u>4th Grade</u> |
|-----------------------------|-------------------------|------------------|
| 1 | Your Savings | |
| 2 | Money Changer | |
| 3 | Bank Account | |
| 4 | Right or Wrong | |
| 5 | Waiting in Line | |
| Ages 9-10 (Advanced) | | <u>5th Grade</u> |
| 6 | Which Mathematician? | |
| 7 | Weight of the Gold Bars | |
| 8 | Help the Grandmother | |
| 9 | Strong Password | |
| 10 | The Vault | |



YOUR SAVINGS

G4
Basic

You were able to save money from your allowance. Count your spare money before depositing it to the bank. Choose the letter of the correct answer to help you in counting.

1. In Monday, you were able to save \$2.35 and \$5.15 in Tuesday. How much did you save in total?

a. 7.50
b. 75

4. You were given \$3.0 by your brother and \$1.75 by your sister. How much did you get in total?

a. 4.75
b. 47.5

2. Yesterday, your mother gave you an additional allowance of \$8.17 and \$7.25. How much in total were given to you?

a. 1.542
b. 15.42

5. You have another \$4.13 and \$9.10 savings in 2 days. How much is it in total?

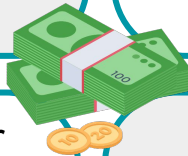
a. 13.23
b. 132.2

3. You spent \$6.32 for your snacks and \$3.12 for drinks. How much did you spend in total?

a. 9.44
b. 94.4

6. You have a target to save \$8.47 and \$7.13. How much is your target in total?

a. 1.56
b. 15.60



MONEY CHANGER

G4
Basic

You went to the bank to have your Dollars exchanged to Pesos. Count your money by choosing the correct sum of the equations from the choices in the box. Don't forget to show the solutions.

16.27



20.40



35.71

19.29

19.82

What is the sum of 11.23 and 9.17?

What is the sum of 14.19 and 5.1?

23.5 is added to 12.21, what is the sum?

7.15 is added to 9.12, what is the sum?

What is the sum of 12.12 and 7.7?



BANK ACCOUNT

G4
Basic

It is your first time opening an account in a bank. While waiting for your account to be processed, match Column A to Column B by shading the equation and the sum with the same color.

COLUMN A



COLUMN B

If 12.37 is added to 11.13, what would be its sum?

54.5

What is the sum of 34.0 and 20.5?

44.3

What is the total when 41.10 is added to 21.1?

55.53

If 33.33 and 22.2 is added together, what is its sum?

23.50

What is the sum of 27.2 and 17.1?

62.20



RIGHT OR WRONG

G4
Basic

There are different currencies in each country. As you study these currencies, write TRUE in the boxes below if the statements are correct, and FALSE if not. Write the correct sum to me it right.

1. I now have \$30.0 with me because I added \$2.5 to my \$27.5 savings.

2. Adding ₱11.3 to the piggy bank with ₱10.23 makes the total savings of ₱21.3.



3. My dad has €16.11 in his right pocket and €14.21 in the other pocket. His total money is €30.32.



4. The ¥23.35 ticket was refunded and added to my account with ¥11.10. My total money is now ¥34.00.

5. I spent a total of £21.00 when I bought lunch and fruits for £16.25 and £4.75.



WAITING IN LINE

G4
Basic

You will be depositing your money to the bank. While waiting in line, add the following decimals and show us your solutions.

1. When 12.16 is added to 12.10, what is its sum?

2. What is the total if 27.12 is added to 10.10?

3. If 11.1 is added to 13.05, what is the sum?



4. Find the total amount of 9.28 and 11.2.

5. This is the sum of 14.30 and 12.00.

6. What is the sum of 8.5 and 7.6?



7. If 9.17 and 8.23 is added, what is the sum?

8. Find the sum of 21.10 and 8.5.

9. When 15.5 is added to 8.5, what is its sum?



WHICH MATHEMATICIAN?

G5
Advanced

As a bank teller, you wanted to know who discovered Addition. Solve the equations below, and fill in the blanks with the letters corresponding to the sum of each equations.

| | | | | | | | | | | |
|---|---|---|---|---|---|---|---|---|---|---|
| | 1 | | 2 | | 3 | | 4 | | 5 | |
| B | | A | | M | | G | | P | | A |



\$

H
26.27

A
40.75

R
40.6

T
21.52

U
43.5

1. If 29.1 is to be added to 11.5, what is its sum?

2. This is the sum when 15.12 is added to 11.15.

3. Find the sum of 23.45 when it is added to 17.3.

4. What is the sum of 31.16 and 12.34?

5. If 19.4 and 2.12 are added together, what is the sum?



WEIGHT OF THE GOLD BARS

G5
Advanced

You are trying to weigh the gold bars in the bank. The weight of the gold bars are written below. Solve the equations and write whether it is greater than ($>$), less than ($<$), or equal ($=$).

The sum of
20.5 and 10.5

The sum of
17.23 and 11.14



The sum of
46.12 and 13.6

The sum of
46.12 and 10.5



The sum of
5.13 and 2.45

The sum of
6.5 and 2.5



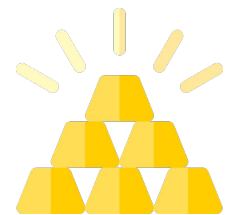
The sum of
2.5 and 2.5

The sum of
3.5 and 1.5



The sum of
 $23.1 + 2.4$

The sum of
 $18.6 + 4.5$



HELP THE GRANDMOTHER

G5
Advanced

A grandmother got confused with the forms to be filled out in the bank. Help her by answering what is being asked below.

13

25.6

32

15

14.22

23.13

1. Add all the decimals inside the circle.

2. Add all the decimals inside the square.

3. Add all the decimals inside the triangle.



Please help me!



STRONG PASSWORD

G5
Advanced

You just got your ATM card. Use a strong password for your ATM by solving the puzzle below. Read the instructions given per puzzle.

| | | |
|------|-----|-----|
| 1. | 1.4 | 2. |
| 12.8 | 6.1 | 3. |
| 4. | 5. | 3.5 |

Solve the puzzle and make sure that all boxes in each row have a total of 20.



Solve the puzzle and make sure that all boxes in each column have a sum of 30.

| | | |
|------|-------|------|
| 13.5 | 8. | 10. |
| 6. | 9. | 21.4 |
| 7. | 10.40 | 11. |



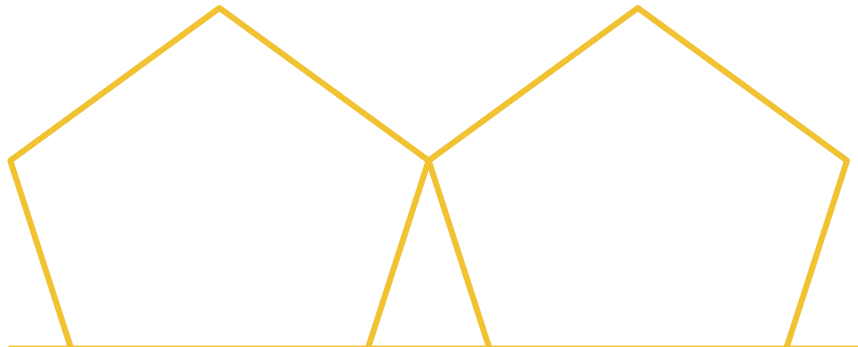
THE VAULT

G5
Advanced

Your supervisor will be giving you the code for the vault. But before this, you need to provide what is being asked below.



**TWO DECIMAL EQUATIONS WITH A
SUM OF 15**



**TWO DECIMAL EQUATIONS WITH A
SUM OF 25**



**TWO DECIMAL EQUATIONS WITH A
SUM OF 40**



ANSWER GUIDE

Activity 1

1. **A.** $2.35 + 5.15 = 7.50$
2. **B.** $8.17 + 7.25 = 15.42$
3. **A.** $6.32 + 3.12 = 9.44$

4. **A.** $3.0 + 1.75 = 4.75$
5. **A.** $4.14 + 9.10 = 13.23$
6. **B.** $4.47 + 7.13 = 11.60$

Activity 2

1. $11.23 + 9.17 = \mathbf{20.40}$
2. $14.19 + 5.1 = \mathbf{19.29}$
3. $23.5 + 12.21 = \mathbf{35.71}$

4. $7.15 + 9.12 = \mathbf{16.27}$
5. $12.12 + 7.7 = \mathbf{19.82}$

Activity 3

1. $12.37 + 11.13 = \mathbf{23.50}$
2. $34.0 + 20.5 = \mathbf{54.5}$
3. $41.10 + 21.1 = \mathbf{62.20}$

4. $33.33 + 22.2 = \mathbf{55.53}$
5. $27.2 + 17.1 = \mathbf{44.3}$

Activity 4

1. TRUE
2. FALSE - ₱21.53
3. TRUE

4. FALSE - ¥34.35
5. TRUE

Activity 5

1. $12.16 + 12.10 = \mathbf{24.26}$
2. $27.12 + 10.10 = \mathbf{37.22}$
3. $11.1 + 13.05 = \mathbf{24.15}$
4. $9.28 + 11.2 = \mathbf{20.48}$
5. $14.30 + 12.00 = \mathbf{26.30}$

6. $8.5 + 7.6 = \mathbf{16.1}$
7. $9.17 + 8.23 = \mathbf{17.40}$
8. $21.10 + 8.5 = \mathbf{29.60}$
9. $15.5 + 8.5 = \mathbf{24}$



ANSWER GUIDE

Activity 6

1. **R.** $29.1 + 11.5 = 40.6$

2. **H** $15.12 + 11.15 = 26.27$

3. **A.** $23.45 + 17.3 = 40.75$

4. **U** $31.16 + 12.34 = 43.50$

5. **T** $19.4 + 2.12 = 21.52$

Activity 7

1. $31 > 28.37$

2. $59.72 > 56.62$

3. $7.58 < 9$

4. $5 = 5$

5. $25.5 > 23.1$

Activity 8

1. $25.6 + 15 = 40.6$

2. $13 + 23.13 = 36.13$

3. $32 + 14.22 = 46.22$

Activity 9

1. 10.6

2. 8

3. 1.1

4. 11.5

5. 5

6. 3.3

7. 13.2

8. 12.1

9. 7.5

10. 4.1

11. 4.5

** Answers may still vary.*

Activity 10

1. $10.4 + 4.6$ | $13.4 + 1.6$

2. $11.2 + 13.8$ | $17.4 + 7.6$

3. $23.14 + 16.86$ | $33.33 + 6.67$

** Answers may still vary.*



Copyright Notice

This resource is licensed under the [Creative Commons Attribution-NonCommercial 4.0](https://creativecommons.org/licenses/by-nc/4.0/) International license.

You are free to:

- **Share** – copy and redistribute the material in any medium or format
- **Adapt** – remix, transform, and build upon the material

Under the following terms:

- **Attribution** – You must give appropriate credit, provide a link to the license, and indicate if changes were made. You may do so in any reasonable manner, but not in any way that suggests the licensor endorses you or your use.
- **NonCommercial** – You may not use the material for commercial purposes.

For more information on this license, visit the following link:

<http://creativecommons.org/licenses/by-nc/4.0/>

Where possible, free-use images are sourced from online repositories such as Wikipedia and Wikimedia Commons. References and sources for images are provided in the speaker notes section of this document.

Thank you!



Thank you

Thank you so much for purchasing and downloading this resource.

We hope it has been useful for you in the classroom and that your students enjoy the activities.

For more teaching and homeschooling resources like this, don't forget to [come back](#) and download the new material we add every week!

Thanks for supporting **Helping With Math**. We can provide teachers with low-cost, high-quality teaching and homeschooling resources because of our loyal subscribers and hope to serve you for many years to come.

- The Entire Helping With Math Team :)

