



3rd  
Basic

4th  
Advanced

# Helping With Math

USA  
GRADES

## Division Tables

Suitable for students  
aged 7-9



This pack is suitable for learners aged 7-9 years old or 3rd to 4th grades (USA). The content covers fact files and relevant basic and advanced activities involving division tables.



*World Cancer Awareness Day is annually observed every 4th day of February to increase awareness of cancer globally.*



÷	12	24
3	4	8
2	6	12

**Division table** is a table that shows the result or quotient of dividing two numbers.

The number that is along the row is the dividend while the number in the column is the divisor. The results are shown where the row and column meet.

Example:  $12 \div 3 = 4$



## DIVISION TABLES FROM 1 TO 6

Example: What is the quotient of 20 and 5?

$$20 \div 5 = 4$$



Exercise: What is the quotient of 24 and 4?

$$\underline{\quad} \div \underline{\quad} = \underline{\quad}$$

1



$$\begin{aligned} 1 \div 1 &= 1 \\ 2 \div 1 &= 2 \\ 3 \div 1 &= 3 \\ 4 \div 1 &= 4 \\ 5 \div 1 &= 5 \\ 6 \div 1 &= 6 \\ 7 \div 1 &= 7 \\ 8 \div 1 &= 8 \\ 9 \div 1 &= 9 \\ 10 \div 1 &= 10 \end{aligned}$$

2



$$\begin{aligned} 2 \div 2 &= 1 \\ 4 \div 2 &= 2 \\ 6 \div 2 &= 3 \\ 8 \div 2 &= 4 \\ 10 \div 2 &= 5 \\ 12 \div 2 &= 6 \\ 14 \div 2 &= 7 \\ 16 \div 2 &= 8 \\ 18 \div 2 &= 9 \\ 20 \div 2 &= 10 \end{aligned}$$

3



$$\begin{aligned} 3 \div 3 &= 1 \\ 6 \div 3 &= 2 \\ 9 \div 3 &= 3 \\ 12 \div 3 &= 4 \\ 15 \div 3 &= 5 \\ 18 \div 3 &= 6 \\ 21 \div 3 &= 7 \\ 24 \div 3 &= 8 \\ 27 \div 3 &= 9 \\ 30 \div 3 &= 10 \end{aligned}$$

4



$$\begin{aligned} 4 \div 4 &= 1 \\ 8 \div 4 &= 2 \\ 12 \div 4 &= 3 \\ 16 \div 4 &= 4 \\ 20 \div 4 &= 5 \\ 24 \div 4 &= 6 \\ 28 \div 4 &= 7 \\ 32 \div 4 &= 8 \\ 36 \div 4 &= 9 \\ 40 \div 4 &= 10 \end{aligned}$$

5



$$\begin{aligned} 5 \div 5 &= 1 \\ 10 \div 5 &= 2 \\ 15 \div 5 &= 3 \\ 20 \div 5 &= 4 \\ 25 \div 5 &= 5 \\ 30 \div 5 &= 6 \\ 35 \div 5 &= 7 \\ 40 \div 5 &= 8 \\ 45 \div 5 &= 9 \\ 50 \div 5 &= 10 \end{aligned}$$

6



$$\begin{aligned} 6 \div 6 &= 1 \\ 12 \div 6 &= 2 \\ 18 \div 6 &= 3 \\ 24 \div 6 &= 4 \\ 30 \div 6 &= 5 \\ 36 \div 6 &= 6 \\ 42 \div 6 &= 7 \\ 48 \div 6 &= 8 \\ 54 \div 6 &= 9 \\ 60 \div 6 &= 10 \end{aligned}$$



## DIVISION TABLES FROM 7 TO 12



7

$$\begin{aligned}7 \div 7 &= 1 \\14 \div 7 &= 2 \\21 \div 7 &= 3 \\28 \div 7 &= 4 \\35 \div 7 &= 5 \\42 \div 7 &= 6 \\49 \div 7 &= 7 \\56 \div 7 &= 8 \\63 \div 7 &= 9 \\70 \div 7 &= 10\end{aligned}$$



8

$$\begin{aligned}8 \div 8 &= 1 \\16 \div 8 &= 2 \\24 \div 8 &= 3 \\32 \div 8 &= 4 \\40 \div 8 &= 5 \\48 \div 8 &= 6 \\56 \div 8 &= 7 \\64 \div 8 &= 8 \\72 \div 8 &= 9 \\80 \div 8 &= 10\end{aligned}$$



9

$$\begin{aligned}9 \div 9 &= 1 \\18 \div 9 &= 2 \\27 \div 9 &= 3 \\36 \div 9 &= 4 \\45 \div 9 &= 5 \\54 \div 9 &= 6 \\63 \div 9 &= 7 \\72 \div 9 &= 8 \\81 \div 9 &= 9 \\90 \div 9 &= 10\end{aligned}$$

10



$$\begin{aligned}10 \div 10 &= 1 \\20 \div 10 &= 2 \\30 \div 10 &= 3 \\40 \div 10 &= 4 \\50 \div 10 &= 5 \\60 \div 10 &= 6 \\70 \div 10 &= 7 \\80 \div 10 &= 8 \\90 \div 10 &= 9 \\100 \div 10 &= 10\end{aligned}$$

11



$$\begin{aligned}11 \div 11 &= 1 \\22 \div 11 &= 2 \\33 \div 11 &= 3 \\44 \div 11 &= 4 \\55 \div 11 &= 5 \\66 \div 11 &= 6 \\77 \div 11 &= 7 \\88 \div 11 &= 8 \\99 \div 11 &= 9 \\110 \div 11 &= 10\end{aligned}$$

12



$$\begin{aligned}12 \div 12 &= 1 \\24 \div 12 &= 2 \\36 \div 12 &= 3 \\48 \div 12 &= 4 \\60 \div 12 &= 5 \\72 \div 12 &= 6 \\84 \div 12 &= 7 \\96 \div 12 &= 8 \\108 \div 12 &= 9 \\120 \div 12 &= 10\end{aligned}$$

Example: Which has a higher answer?  $24 \div 8$  or  $28 \div 7$ ?

$$24 \div 8 = 3$$

$$28 \div 7 = 4$$



Exercise: Which has a higher answer?  $50 \div 5$  or  $45 \div 9$ ?

$$50 \div 5 = \underline{\quad}$$

$$45 \div 9 = \underline{\quad}$$



# TABLE OF ACTIVITIES

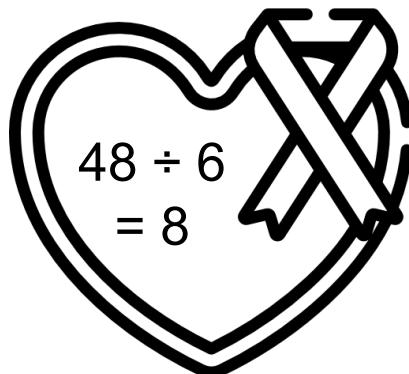
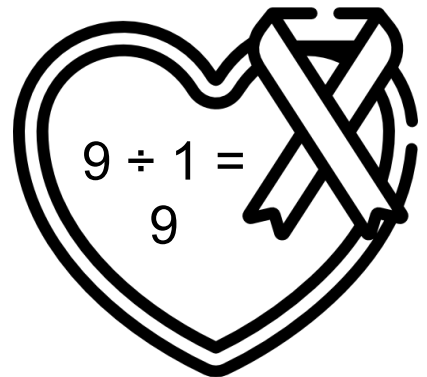
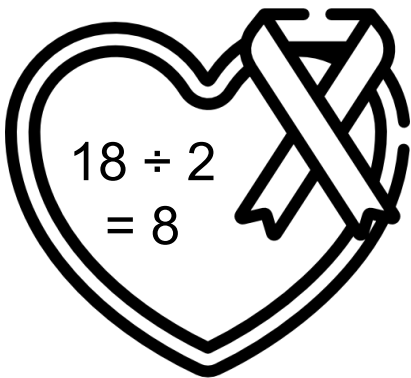
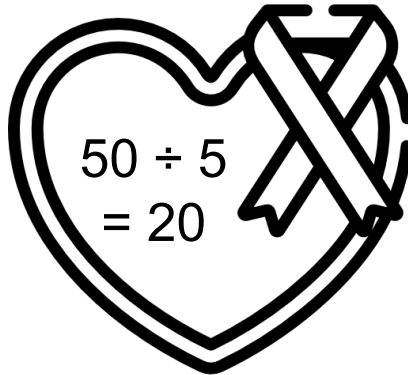
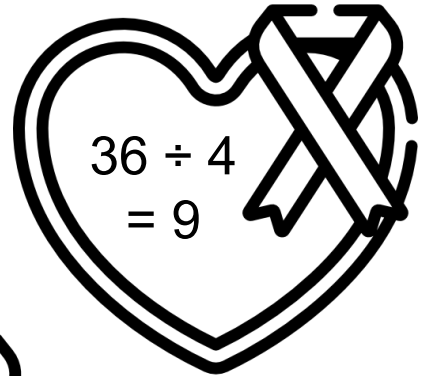
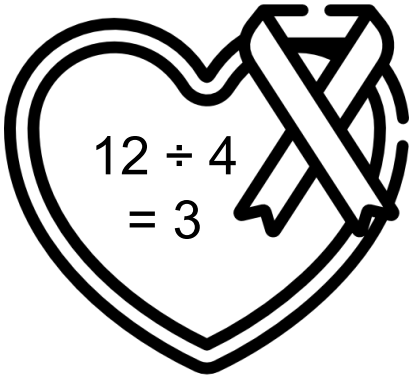
<b>Ages 7-8</b> (Basic)		<u>3rd Grade</u>
1	Show Us the Pink Ribbons	
2	Give a Little Hope	
3	Shout out to Prevent Cancer	
4	Patient-Oncologist Ratio	
5	World Cancer Awareness Day	
<b>Ages 8-9</b> (Advanced)		<u>4th Grade</u>
6	Pink Ribbon Task	
7	Cancer Treatment House	
8	A.K.A Renal Cancer	
9	Cancer Patients	
10	I Am and I Will Campaign	



# SHOW US THE PINK RIBBONS

G3  
Basic

Pink ribbons are used to promote cancer awareness. Analyze each math sentence. Color the icon that shows the correct division sentence.



# GIVE A LITTLE HOPE

G3  
Basic

Let us offer this activity to every cancer patient in the world to give them hope. Solve the Division flashcards below. You are only given 1 minute to complete the flash cards.

1.

$$\begin{array}{r} 27 \\ \div \\ \hline 3 \end{array}$$



2.

$$\begin{array}{r} 40 \\ \div \\ \hline 5 \end{array}$$



3.

$$\begin{array}{r} 24 \\ \div \\ \hline 4 \end{array}$$



4.

$$\begin{array}{r} 7 \\ \div \\ \hline 1 \end{array}$$

5.

$$\begin{array}{r} 30 \\ \div \\ \hline 6 \end{array}$$

6.

$$\begin{array}{r} 10 \\ \div \\ \hline 2 \end{array}$$



# SHOUT OUT TO PREVENT CANCER

G3  
Basic

Shout out to prevent cancer and help those who are suffering from this disease. Fill in the blanks. Afterwards, write the division sentence in words.

$$1. \quad 24 \div \underline{\hspace{2cm}} = 8$$

Division  
sentence:



$$2. \quad \underline{\hspace{2cm}} \div 6 = 7$$

Division  
sentence:



$$3. \quad 32 \div 4 = \underline{\hspace{2cm}}$$

Division  
sentence:



$$1. \quad 45 \div 5 = \underline{\hspace{2cm}}$$

Division  
sentence:



# PATIENT-ONCOLOGIST RATIO

G3  
Basic

These tables tell us the number of patients each oncologist will be handling today. Apply your understanding of division and write the quotient inside the table.

1.

$\div$	6	3
1		
3		

2.

$\div$	20	40
4		
5		

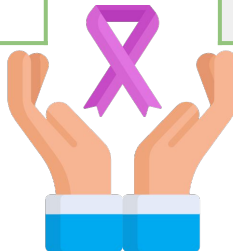


3.

$\div$	36	24
6		
4		

4.

$\div$	12	16
4		
2		





# WORLD CANCER AWARENESS DAY

G3  
Basic

To mark this day as World Cancer Awareness Day, answer the following questions below. Show your complete solution.

1.) What is sixty divided by six?

2.) When the answer in the previous number is multiplied by three, and the answer is divided by five, what is the answer?

3.) When the answer in the previous number is multiplied by six, and the answer is divided by four, what is the answer?



# PINK RIBBON TASK

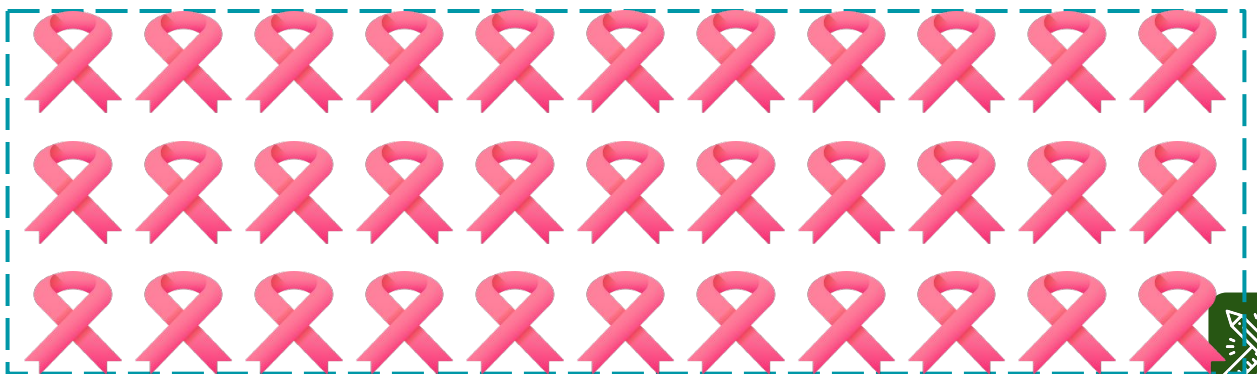
G4  
Advanced

Cut and paste these pink ribbons in accordance with the problem below. Let's do this to give hope to the people who have cancer.

There are 66 ribbons. How many groups of 6 ribbons can be formed? Note: 1 ribbon = 2



Paste your answer here:



# CANCER TREATMENT HOUSE

G4  
Advanced

Today in a cancer treatment house, the head medical officer would like to play a game. Read each sentence carefully. If correct, put a check (✓) inside the box and if incorrect, write the correct quotient.



1 The quotient of fifty-six and eight is six.

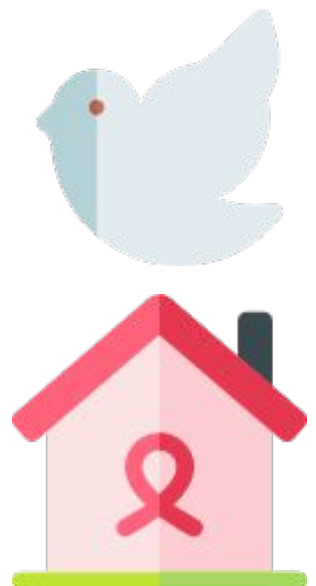
2 The quotient of seventy and ten is seventeen.

3 The quotient of sixty-three and seven is eight.

4 The quotient of seventy-two and nine is seven.

5 The quotient of seventy-seven and eleven is seventeen.

6 The quotient of eighty-four and twelve is nine.



# A.K.A RENAL CANCER

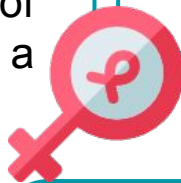
G4  
Advanced

Solve each division problem to reveal the missing word. Clue: this is a type of renal cancer.

Trivia:

This type of cancer is also known as renal cancer in which the cells become malignant and grows out of control, which now forms a tumor.

9	10	7	4	8	6	



$$\begin{array}{r} \text{D} \quad 63 \\ \div \\ \hline 9 \end{array}$$

$$\begin{array}{r} \text{E} \quad 56 \\ \div \\ \hline 7 \end{array}$$

$$\begin{array}{r} \text{I} \quad 80 \\ \div \\ \hline 8 \end{array}$$

$$\begin{array}{r} \text{K} \quad 99 \\ \div \\ \hline 11 \end{array}$$

$$\begin{array}{r} \text{N} \quad 48 \\ \div \\ \hline 12 \end{array}$$

$$\begin{array}{r} \text{Y} \quad 72 \\ \div \\ \hline 12 \end{array}$$



# CANCER PATIENTS

G4  
Advanced

Let's apply our understanding of division to complete the task. You need two dice for this activity.

For the **dividend**, roll two dice then multiply them.

For the **divisor**, roll only one dice.

Note: Make sure that the division sentence are divisible by each other. Example, 24 and 5 will not obtain a whole number.



Solution:

1. There are \_\_\_\_\_ patients in the Grey Sloan Hospital who conducted a medical laboratory. The nurse divided the patients into \_\_\_\_\_ laboratory rooms. How many patients does each room will cater?



Solution:

2. Zola logged into a website and found an article about Cancer awareness with \_\_\_\_\_ pages. If she reads \_\_\_\_\_ pages per day, how many days will take her to finish reading the article?



# I AM AND I WILL CAMPAIGN

G4  
Advanced

Join the campaign for this year's World Cancer Day theme. Do that by selecting the correct answer. Encircle the letter of your choice.



1. What number should go in the blank to make the number sentence true?  $\underline{\quad} \div 11 = 10$

A 100

C 110

B 101

D 121

2. Examine the division sentences. Which one shows the correct quotient?

A  $7 \div 63 = 9$

C  $63 \div 9 = 6$

B  $9 \div 6 = 3$

D  $63 \div 7 = 9$



3. Which of the following division sentence has the largest quotient?

A  $49 \div 7$

C  $56 \div 8$

B  $70 \div 7$

D  $96 \div 12$

4. What has the same quotient as  $60 \div 10$ ?

A  $66 \div 11$

C  $35 \div 7$

B  $60 \div 12$

D  $32 \div 8$



# ANSWER GUIDE

## Activity 1

- $12 \div 4 = 3$
- $36 \div 4 = 9$
- $48 \div 6 = 8$
- $9 \div 1 = 9$

## Activity 3

- 3: twenty-four divided by three is equal to eight
- 42: forty-two divided by six is equal to seven
- 8: thirty-two divided by four is equal to eight
- 9: forty-five divided by five is equal to nine

## Activity 5

- 10
- 6
- 9

## Activity 7

- 7
- 7
- 9
- 8
- 7
- 7

## Activity 9

Answers may vary.

## Activity 2

- 9
- 8
- 6
- 7
- 5
- 5

## Activity 4

- 6, 3  
2, 1
- 5, 10  
4, 8
- 6, 4  
9, 6
- 3, 4  
6, 8

## Activity 6

- 11 groups

## Activity 8

D=7      K=9      Word:  
E=8      N=4      Kidney  
I=10      Y=6

## Activity 10

- C
- D
- B
- A



# Copyright Notice

This resource is licensed under the [Creative Commons Attribution-NonCommercial 4.0](https://creativecommons.org/licenses/by-nc/4.0/) International license.

You are free to:

- **Share** – copy and redistribute the material in any medium or format
- **Adapt** – remix, transform, and build upon the material

Under the following terms:

- **Attribution** – You must give appropriate credit, provide a link to the license, and indicate if changes were made. You may do so in any reasonable manner, but not in any way that suggests the licensor endorses you or your use.
- **NonCommercial** – You may not use the material for commercial purposes.

For more information on this license, visit the following link:

<http://creativecommons.org/licenses/by-nc/4.0/>

Where possible, free-use images are sourced from online repositories such as Wikipedia and Wikimedia Commons. References and sources for images are provided in the speaker notes section of this document.

Thank you!





# Thank you

Thank you so much for purchasing and downloading this resource.

We hope it has been useful for you in the classroom and that your students enjoy the activities.

For more teaching and homeschooling resources like this, don't forget to [come back](#) and download the new material we add every week!

Thanks for supporting **Helping With Math**. We can provide teachers with low-cost, high-quality teaching and homeschooling resources because of our loyal subscribers and hope to serve you for many years to come.

- The Entire Helping With Math Team :)

