



Helping With Math

Shape Partitions (Rectangles and Circles)

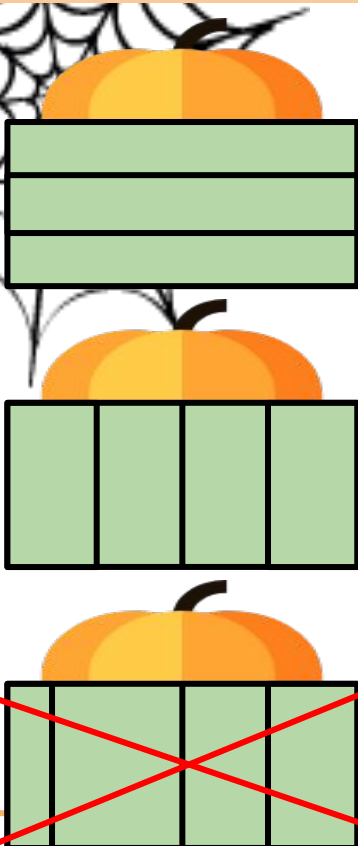


GRADE 2

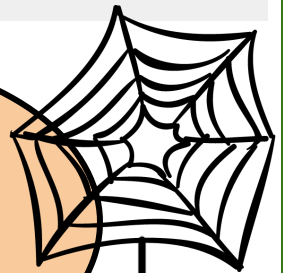


Partition means to split or separate something into different pieces. Shapes can be partitioned into equal sized pieces or different sized pieces.

Partitioning Rectangles



A rectangle can be partitioned into rows or columns.



When we **partition** a rectangle, we need to make sure that the lines are equally spaced.

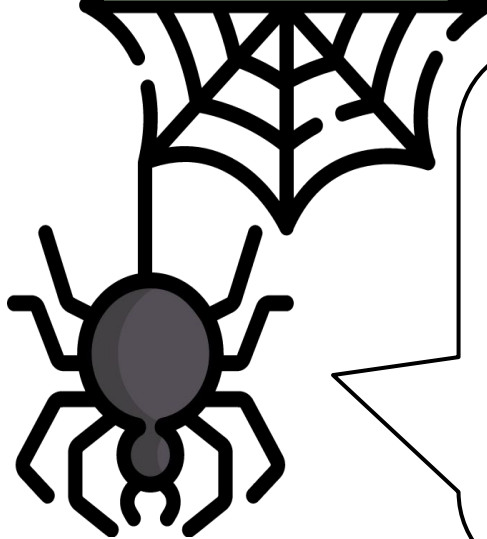
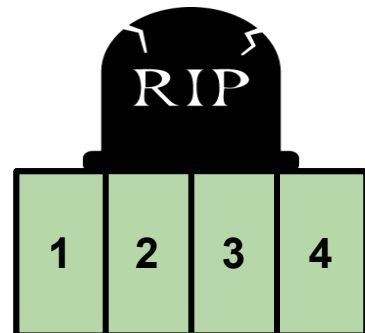
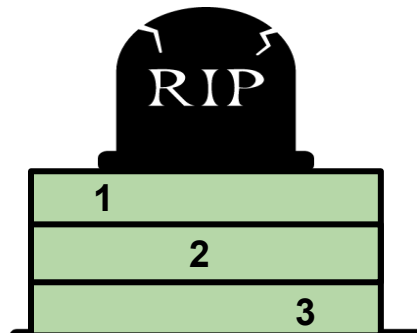
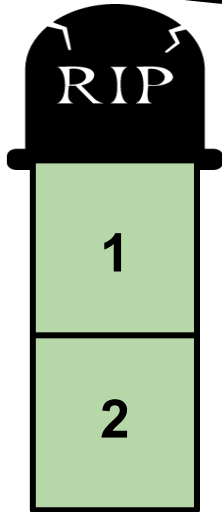


Shape Partitions (Rectangles and Circles)

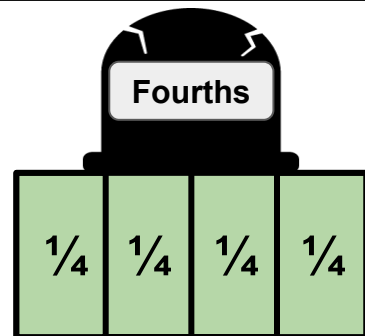
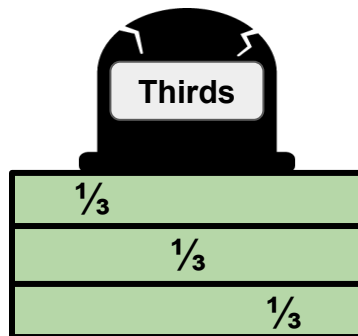
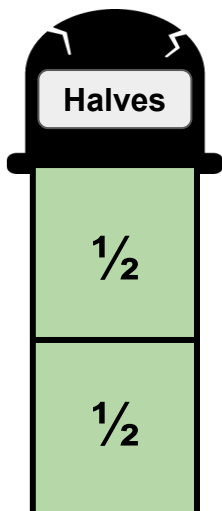


Partitioning Rectangles

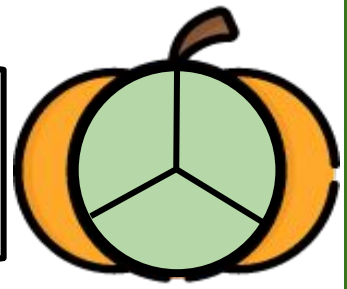
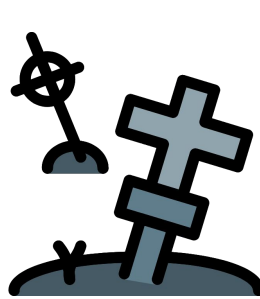
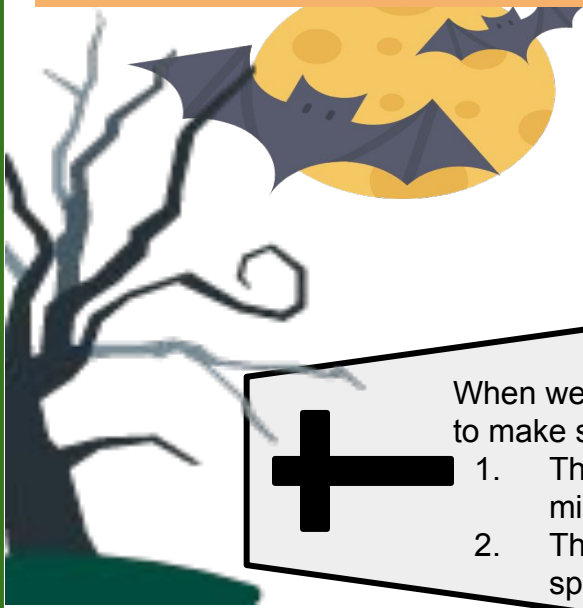
After we partition rectangles, we count the number of equal shares we have now.



When a shape is partitioned into 2 equal pieces, each piece is called a **HALF**. When partitioned in 3 equal pieces, one of the pieces is called a **THIRD**. When partitioned into 4 equal pieces, each piece is called a **QUARTER** or a **FOURTH**.



Partitioning Circles

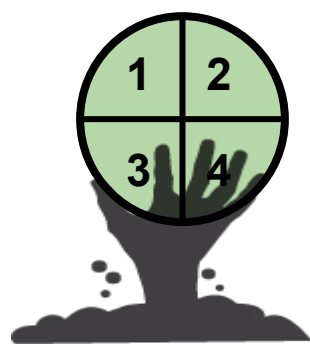
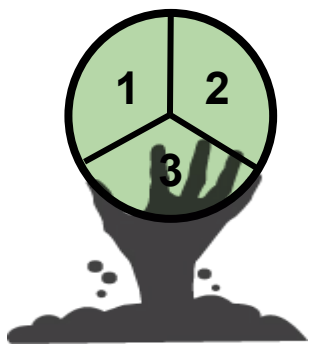
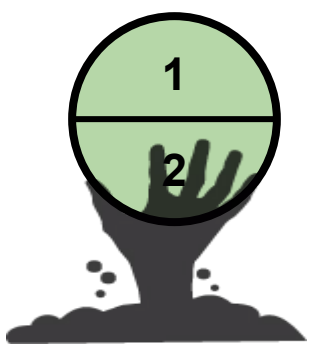


+

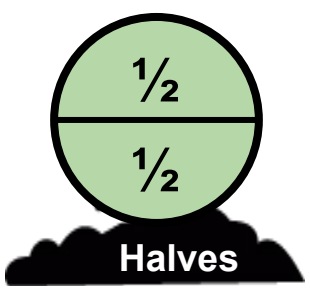
When we **partition** a circle, we need to make sure of 2 things:

1. That the lines go through the middle.
2. That the lines are equally spaced.

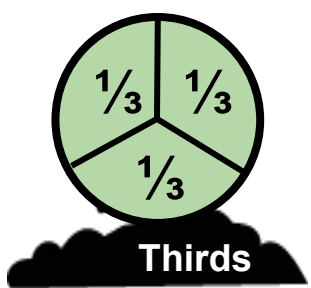
After we partition, we count the number of equal shares we now have.



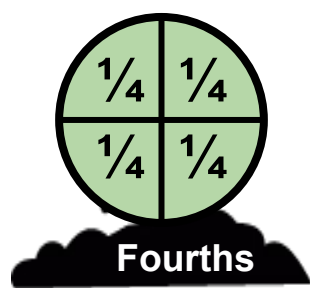
When a shape is partitioned into 2 equal pieces, each piece called a **HALF**, when partitioned in 3 equal pieces, one of the pieces is called a **THIRD** and when partitioned into 4 equal pieces, **each piece is called a QUARTER or a FOURTH.**



Halves



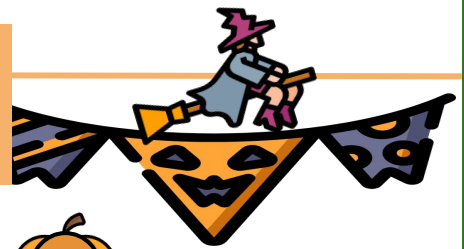
Thirds



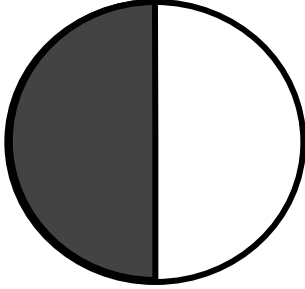
Fourths

As the number of partitions increase, the size of each piece gets smaller – the size of the pieces decreases.

Partition the following shapes then shade it as indicated. Each rectangle or circle is one whole.



1 1 half



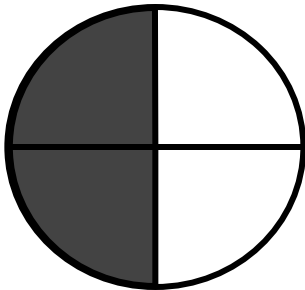
2 1 fourth



3 1 third



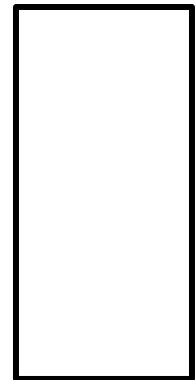
4 2 fourths



5 2 halves



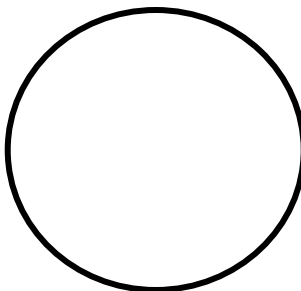
6 2 thirds



7 3 thirds



8 3 fourths



9 3 halves

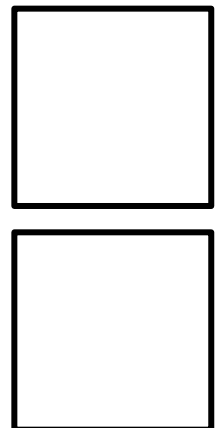


TABLE OF ACTIVITIES

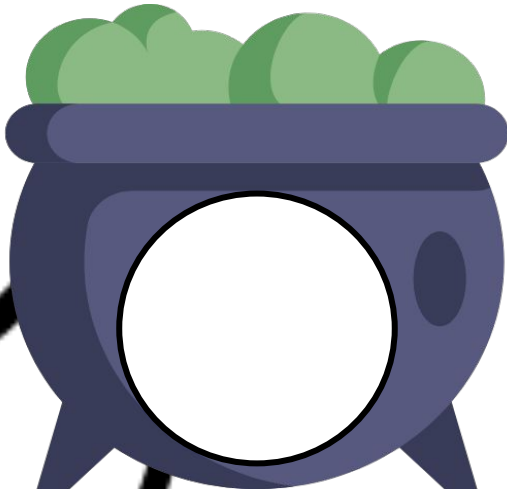
1. Cauldron
2. Spider Belly
3. Scary Basket
4. Hallowshape
5. Haunted House
6. Representing
7. Cemetery
8. Rocobox
9. Eye Monster
10. Split-Up



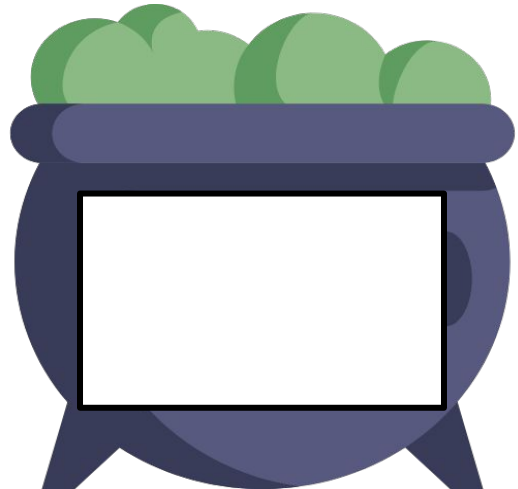
CAULDRON

Read the instructions and give the correct answers.

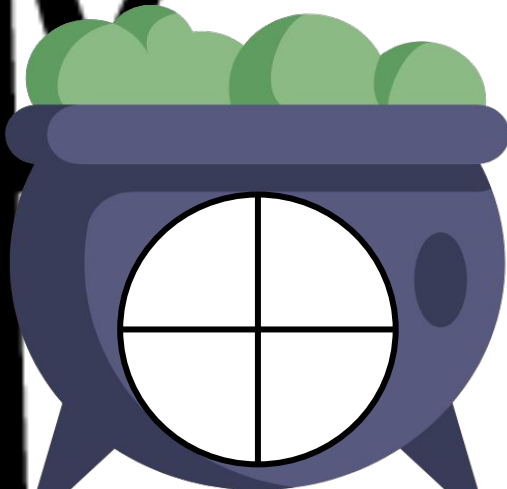
Partition the circles into 2 halves.



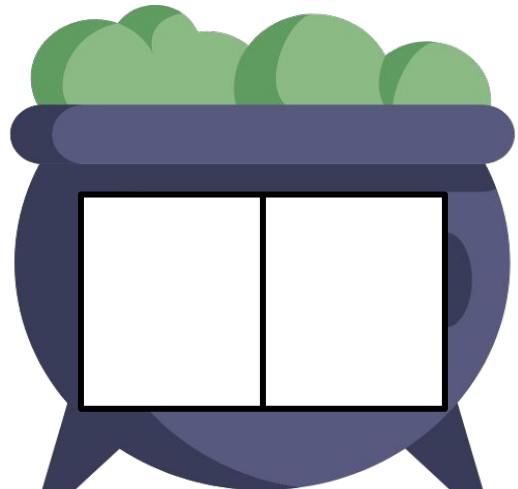
Partition the rectangles into fourths.



Color 2 quarters of the circle.



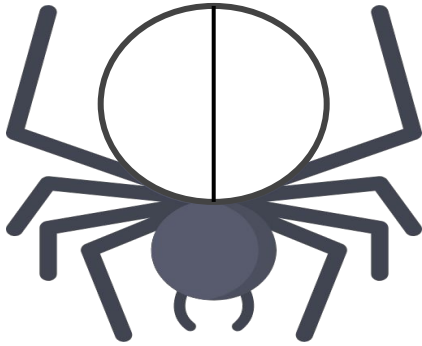
Color one half of rectangle.



SPIDER BELLY

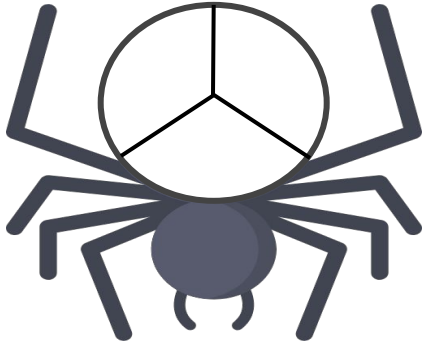
Shade the circles to match the fraction.

1



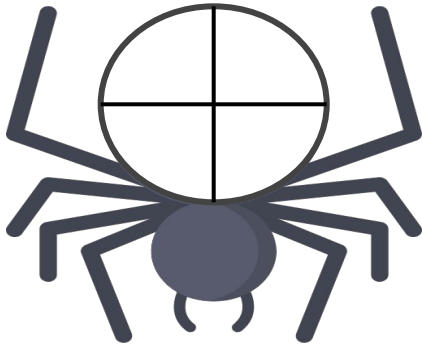
color $\frac{1}{2}$

2



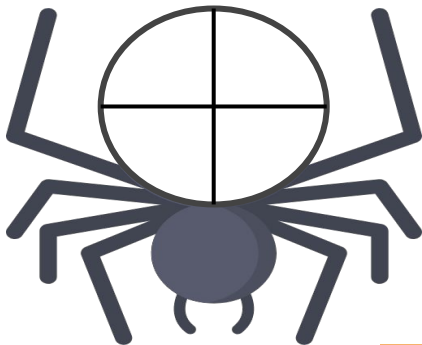
color $\frac{2}{3}$

3

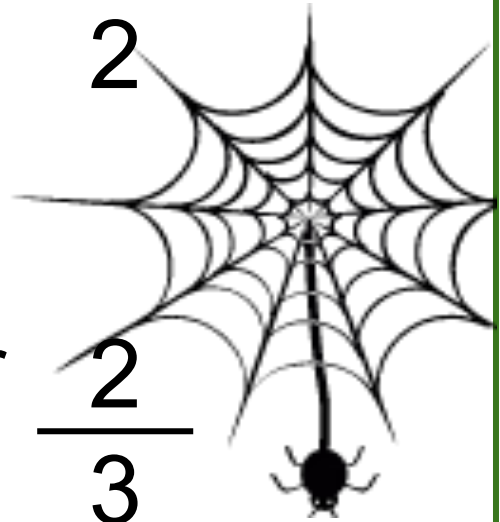


color $\frac{2}{4}$

4

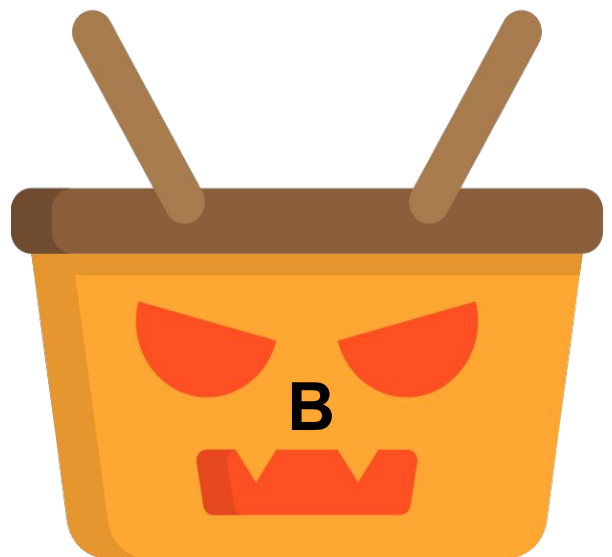
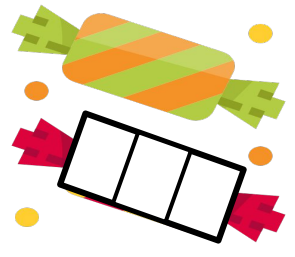
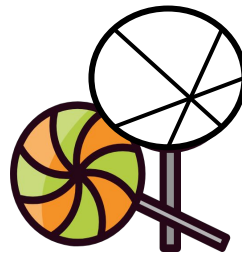
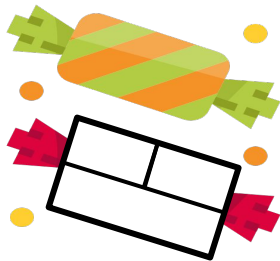
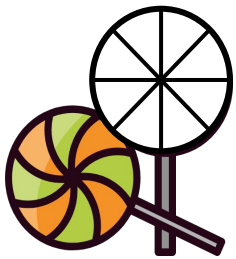
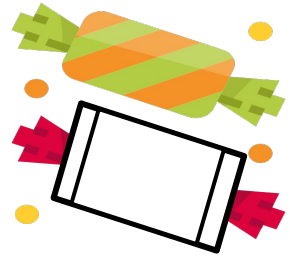
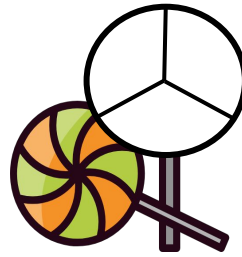
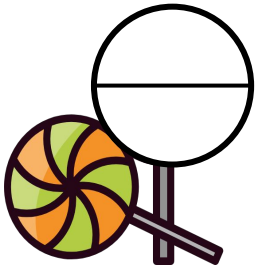


color $\frac{1}{4}$



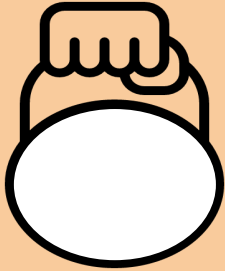
SCARY BASKET

Put on the basket A the shapes that are equally divided and on the basket B, those that are not.



HALLOWSHAPE

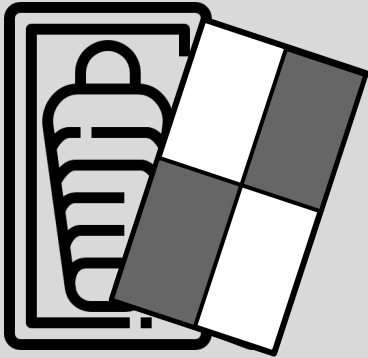
Read the instructions or questions and give the correct answers.



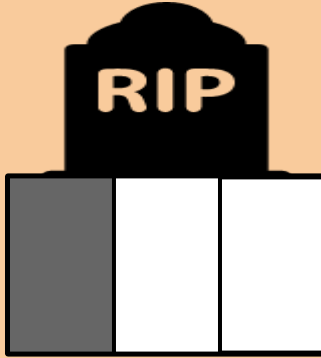
Partition the circle into two equal shares. Label the equal shares.



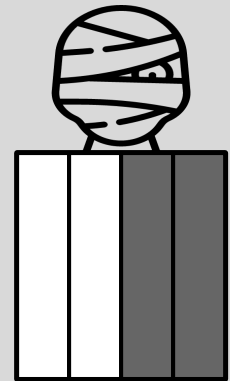
Partition the rectangle into two equal shares. Label the equal shares.



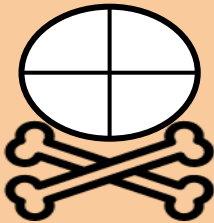
How much is shaded? _____



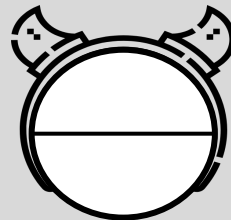
How much is shaded? _____



How much is shaded? _____



Shade three fourths.

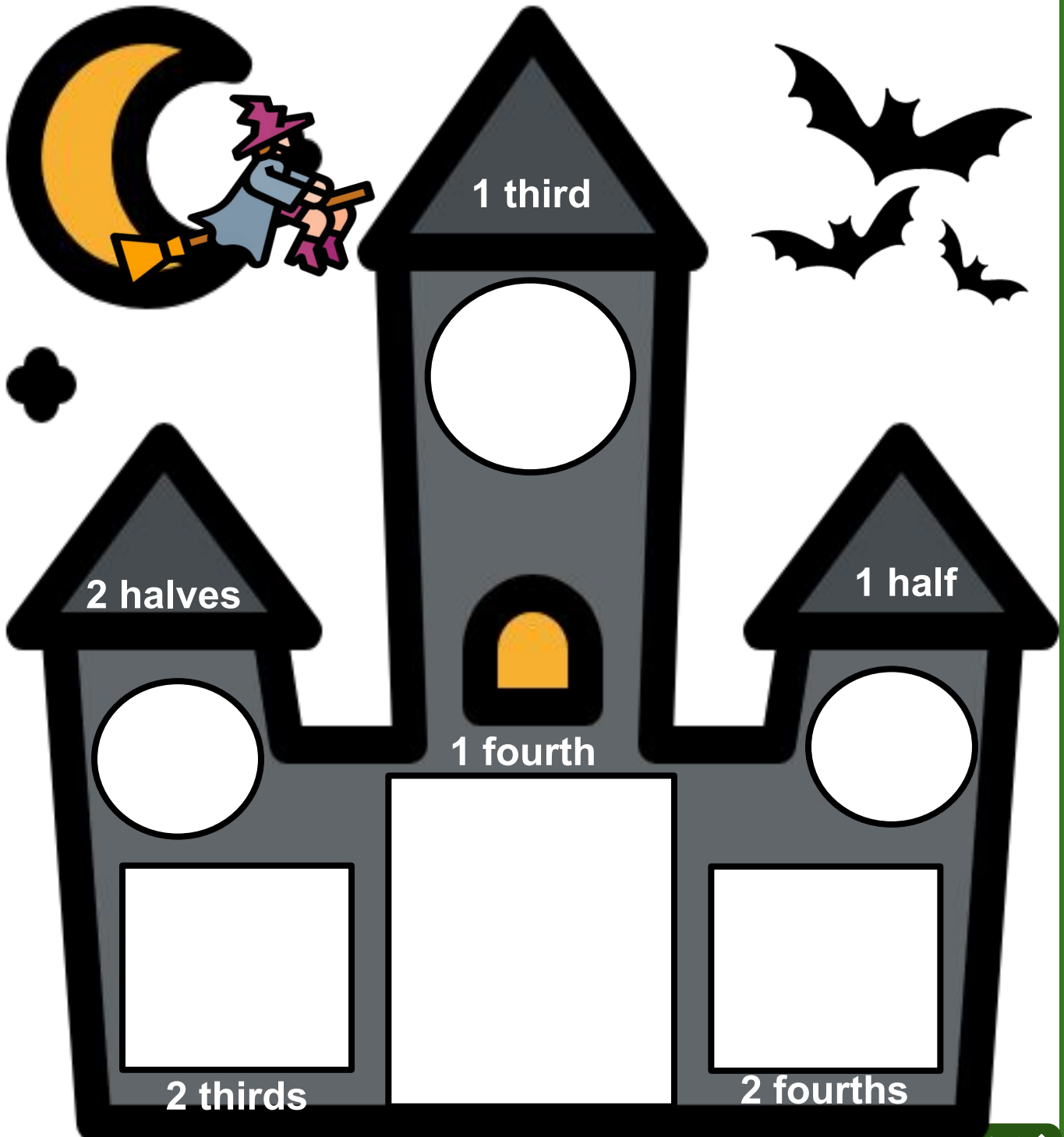


Shade one half.



HAUNTED HOUSE

Partition and shade the following shapes as indicated. Each rectangle or circle is one whole.



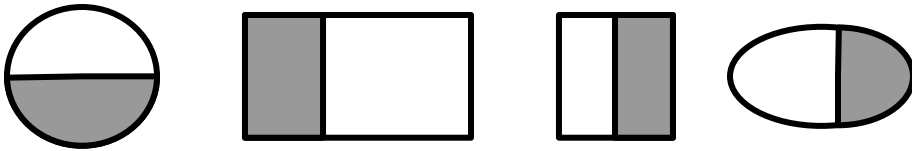
Shape Partitions (Rectangles and Circles)



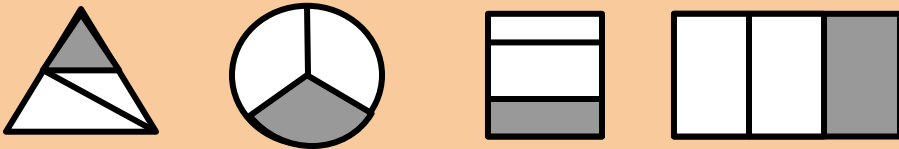
REPRESENTING

Encircle the correct shapes.

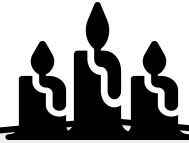
1. Encircle the shapes that represent the fraction $\frac{1}{2}$.



2. Encircle the shapes that represent the fraction $\frac{1}{3}$.



3. Encircle the shapes that represent the fraction $\frac{1}{4}$.

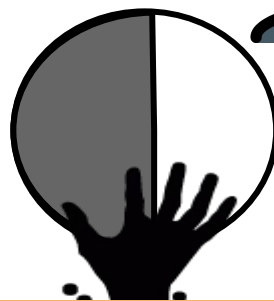
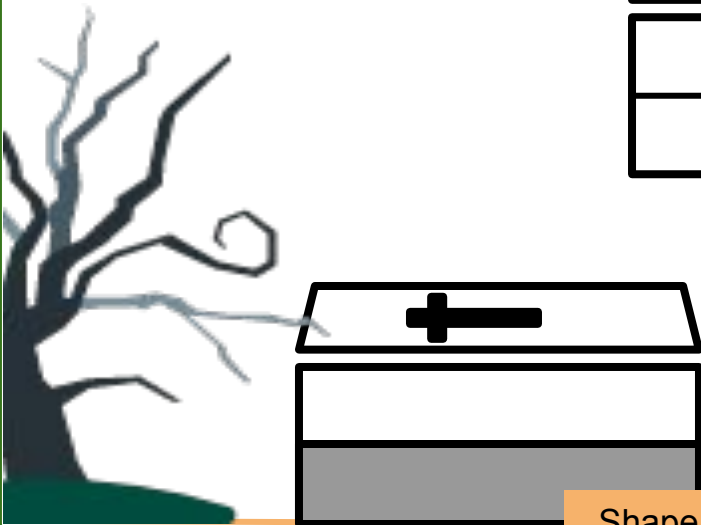
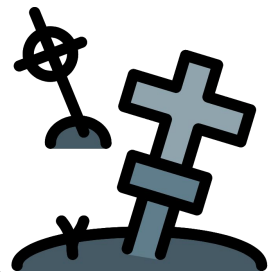
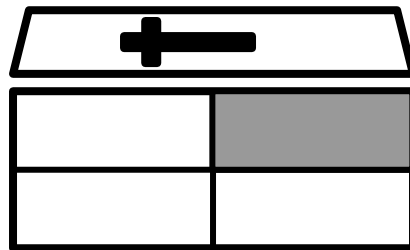
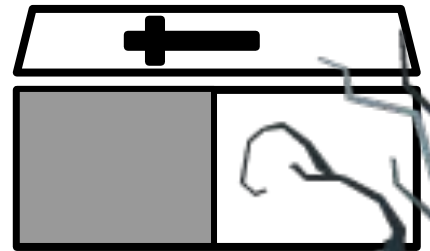
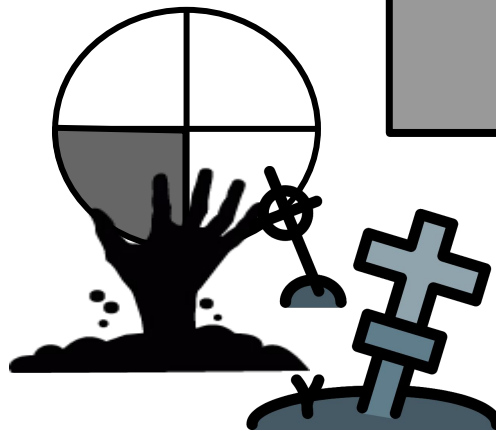
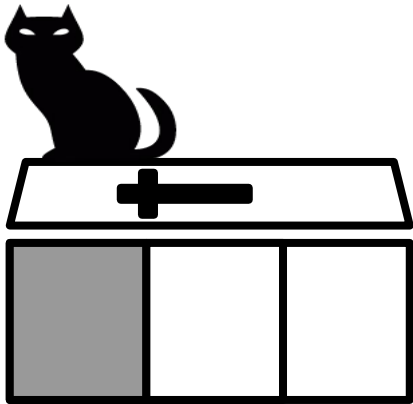
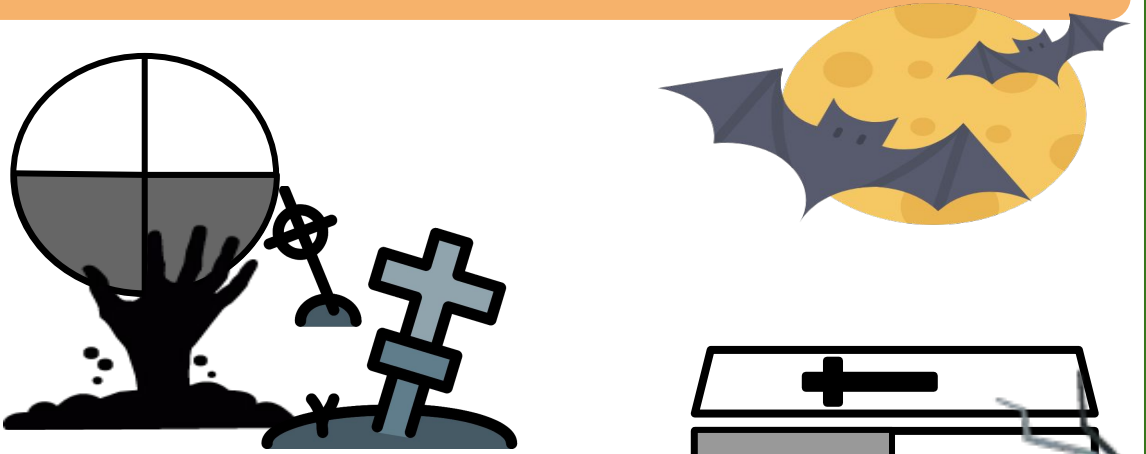


- How many halves are there in a whole? _____
- How many thirds are there in a whole? _____
- How many fourths are there in a whole? _____



CEMETERY

Encircle the shapes that have 2 equal shares with 1 share shaded.



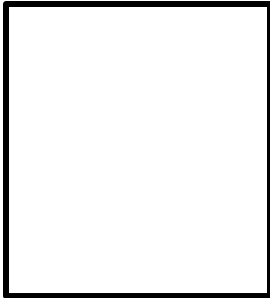
Shape Partitions (Rectangles and Circles)



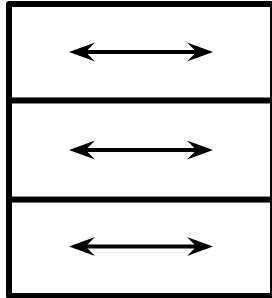
ROCOBOX

Partition the rectangle as described. Count to find the number of boxes.

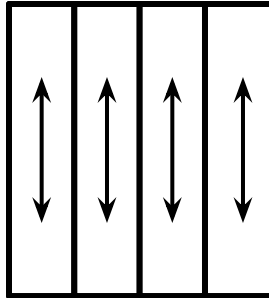
Rectangle



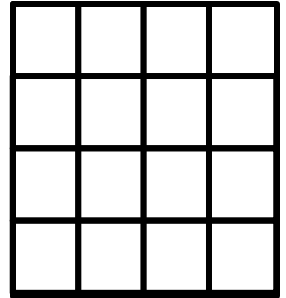
3 rows



4 columns



3 rows and 4 columns
12 boxes total



3 rows, 2 columns
_____ boxes



2 rows, 5 columns
_____ boxes



4 rows, 4 columns
_____ boxes



3 rows, 3 columns
_____ boxes



4 rows, 3 columns
_____ boxes



5 rows, 3 columns
_____ boxes



4 rows, 5 columns
_____ boxes



5 rows, 5 columns
_____ boxes



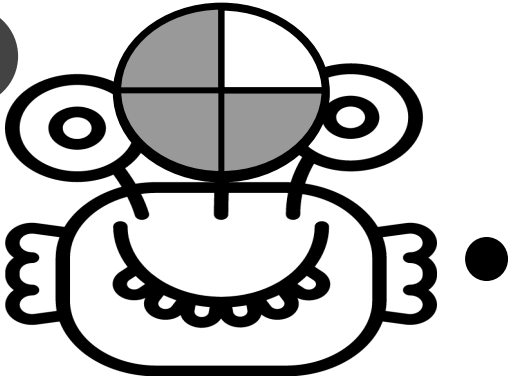
2 rows, 4 columns
_____ boxes



EYE MONSTERS

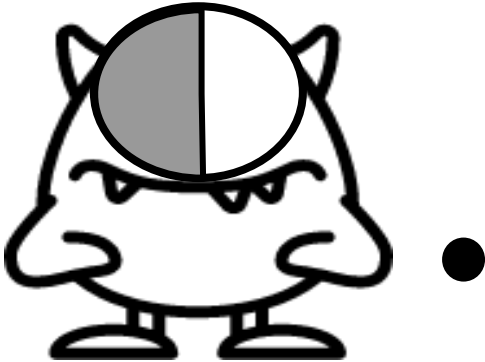
Look and match the shaded part/s of each shape to the letter that describes the shaded portion.

1



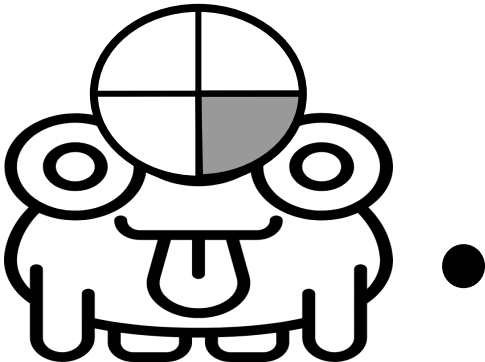
● two-fourths

2



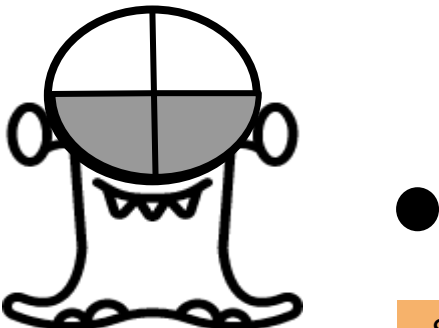
● one-fourth

3



● one half

4

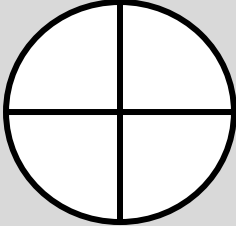
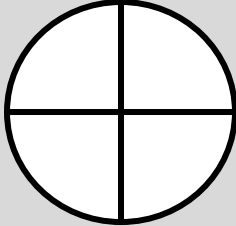
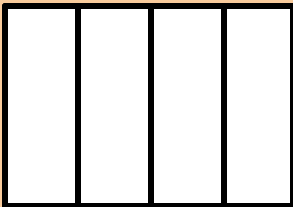
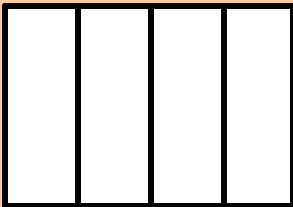

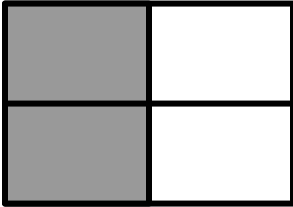
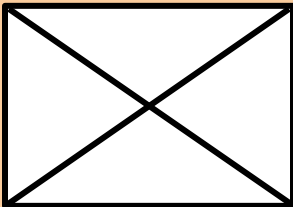
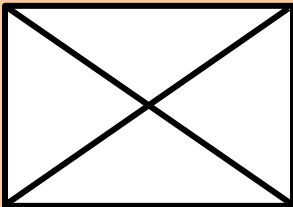
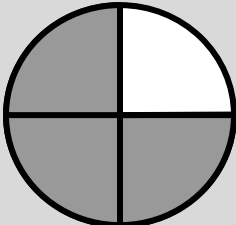
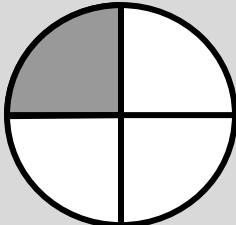


● three quarters



SPLIT-UP

Write the fractions presented on each shape. Also shade the shapes that represent the fraction.

 = $\frac{\boxed{1}}{\boxed{4}}$	 = $\frac{\boxed{3}}{\boxed{4}}$
 = $\frac{\boxed{2}}{\boxed{4}}$	 = $\frac{\boxed{1}}{\boxed{4}}$
 = $\frac{\boxed{}}{\boxed{}}$	 = $\frac{\boxed{}}{\boxed{}}$
 = $\frac{\boxed{2}}{\boxed{4}}$	 = $\frac{\boxed{3}}{\boxed{4}}$
 = $\frac{\boxed{}}{\boxed{}}$	 = $\frac{\boxed{}}{\boxed{}}$



Copyright Notice

This resource is licensed under the [Creative Commons Attribution-NonCommercial 4.0](https://creativecommons.org/licenses/by-nc/4.0/) International license.

You are free to:

- **Share** – copy and redistribute the material in any medium or format
- **Adapt** – remix, transform, and build upon the material

Under the following terms:

- **Attribution** – You must give appropriate credit, provide a link to the license, and indicate if changes were made. You may do so in any reasonable manner, but not in any way that suggests the licensor endorses you or your use.
- **NonCommercial** – You may not use the material for commercial purposes.

For more information on this license, visit the following link:

<http://creativecommons.org/licenses/by-nc/4.0/>

Where possible, free-use images are sourced from online repositories such as Wikipedia and Wikimedia Commons. References and sources for images are provided in the speaker notes section of this document.

Thank you!



Thank you

Thank you so much for purchasing and downloading this resource.

We hope it has been useful for you in the classroom and that your students enjoy the activities.

For more teaching and homeschooling resources like this, don't forget to [come back](#) and download the new material we add every week!

Thanks for supporting **Helping With Math**. We can provide teachers with low-cost, high-quality teaching and homeschooling resources because of our loyal subscribers and hope to serve you for many years to come.

- The Entire Helping With Math Team :)

